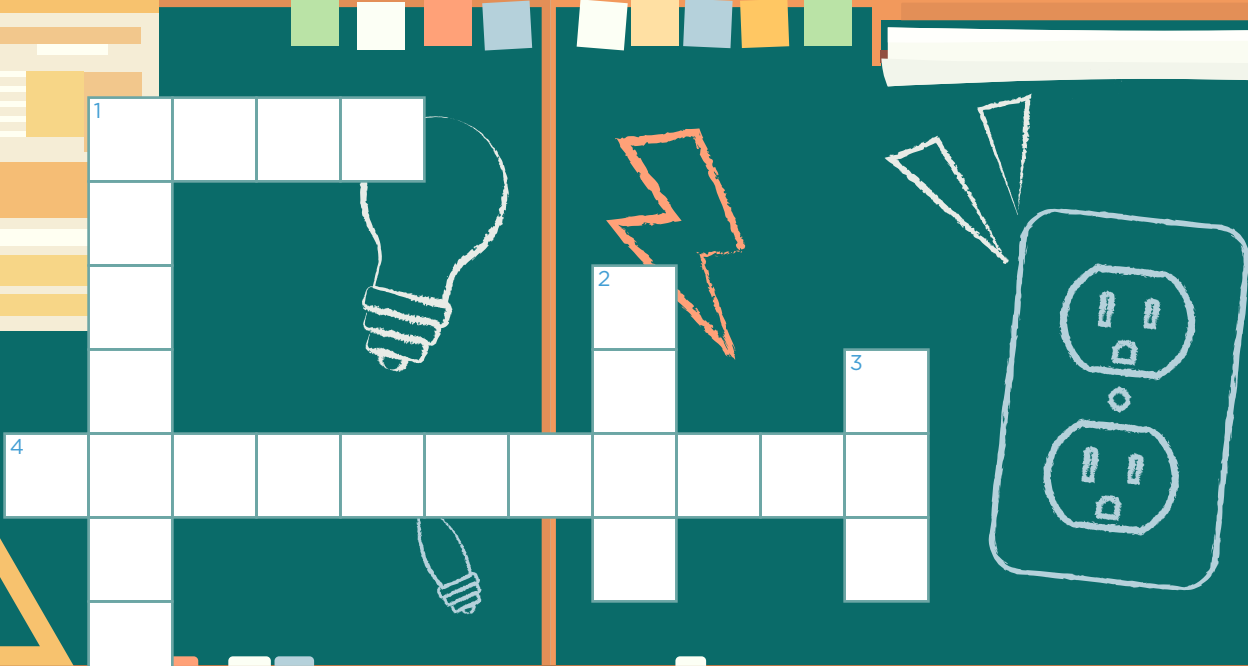
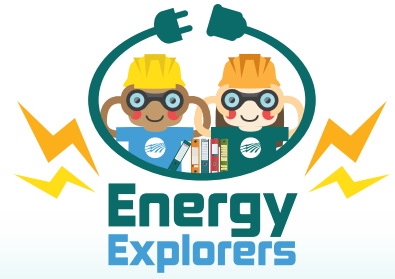


BACK-TO-SCHOOL SAFETY CROSSWORD PUZZLE

As you gear up for a new school year, remember to practice electrical safety in the classroom *and* at home. From powering electronic devices to spending time outdoors with friends, always play it safe around electricity.

Read the clues below to complete the crossword puzzle, then double check your answers in the key.



ACROSS:

1. Never insert anything other than this into an electrical outlet.
4. When outdoors, stay away from these big green boxes that lower electricity voltage.

DOWN

1. Never play around these when you're outside; you can get hurt!
2. Don't yank on a _____ when unplugging it. Instead, grab the base and pull from there.
3. Always make sure your hands are _____ before plugging anything in.

ANSWER KEY

3. DOWN:
DRY

2. DOWN:
CORD

1. DOWN:
POWER LINES

4. ACROSS:
TRANSFORMER

1. ACROSS:
PLUG